

Plan to Accompany Disclosure Statement of a Strata Subdivision of Lot 3, Section 72, Esquimalt District, Plan VIP71257.

BCGS 92B.043

'City of Langford'

Scale 1:500

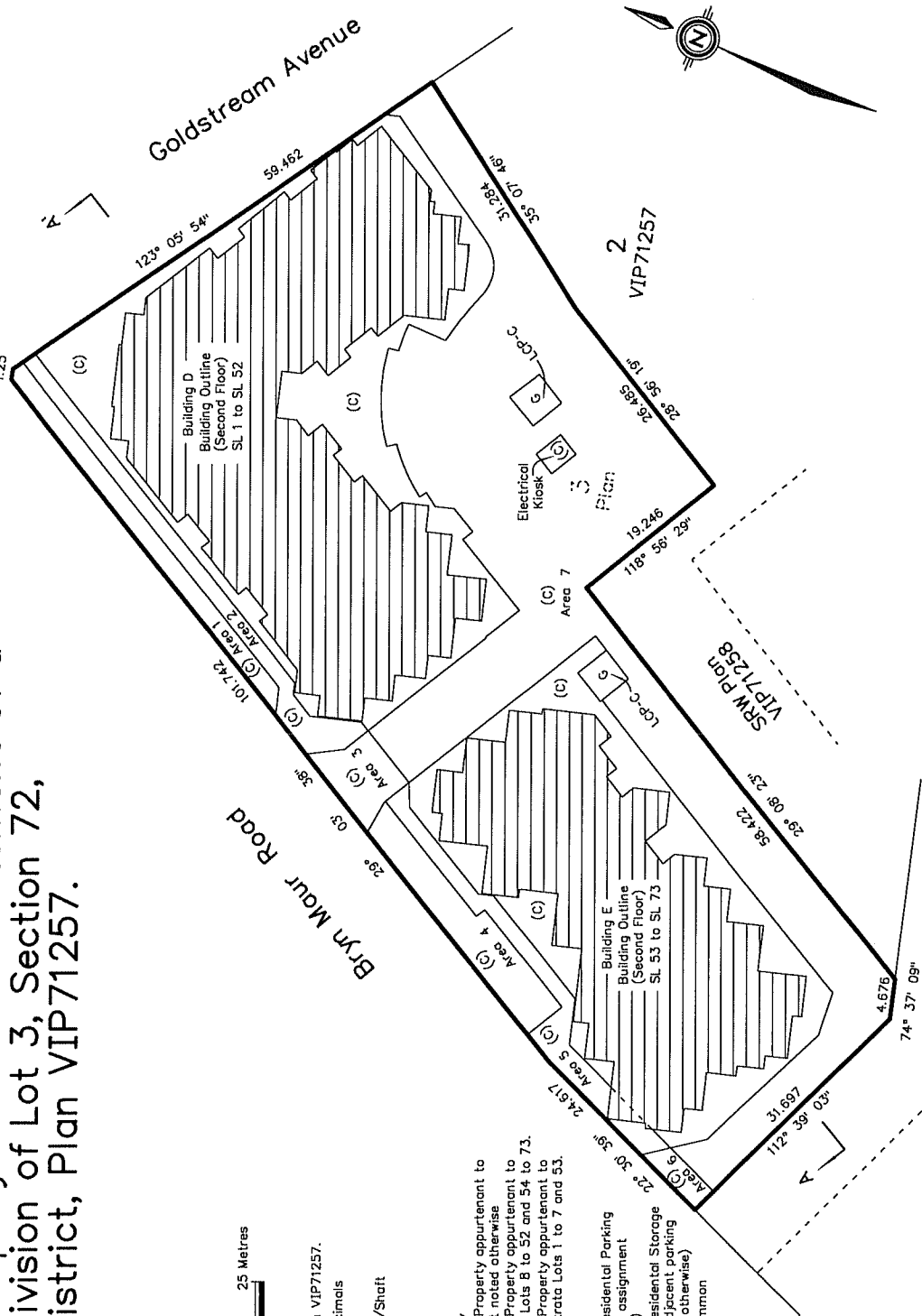


Legend:

Grid bearings are derived from Plan VIP71257.

All distances are in metres and decimals thereof unless otherwise indicated.

- M Denotes Mechanical Room/Shaft
- E Denotes Electrical Closet
- G Denotes Garbage Area
- EV Denotes Elevator Vest
- (C) Denotes Common Property
- LCP Denotes Limited Common Property appurtenant to adjacent SL if not noted otherwise
- LCP-R Denotes Limited Common Property appurtenant to Residential Strata Lots 8 to 52 and 54 to 73.
- LCP-C Denotes Limited Common Property appurtenant to Non-Residential Strata Lots 1 to 7 and 53.
- m² Denotes Square metres
- SL Denotes Strata Lot
- (P) Denotes Parking - LCP (Residential Parking with particular SL assignment to be determined)
- (S) Denotes Storage - LCP (Residential Storage appurtenant to adjacent parking stall if not noted otherwise)
- US Denotes Utility Shaft - Common Property unless otherwise noted



All patios, balconies and ground floor common property areas are defined as to height by the centre of the floor above or its extensions, or where there is no floor above, by the average height of a strata lot within the same building unless otherwise indicated.

Civic Address: 755 Goldstream

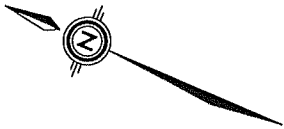
Michael J. McIlvoney
 British Columbia Land Surveyor
 Victoria, B.C.
 (250) 474-5538

File: 1948Strata-Disclosure

Plan VIP71257

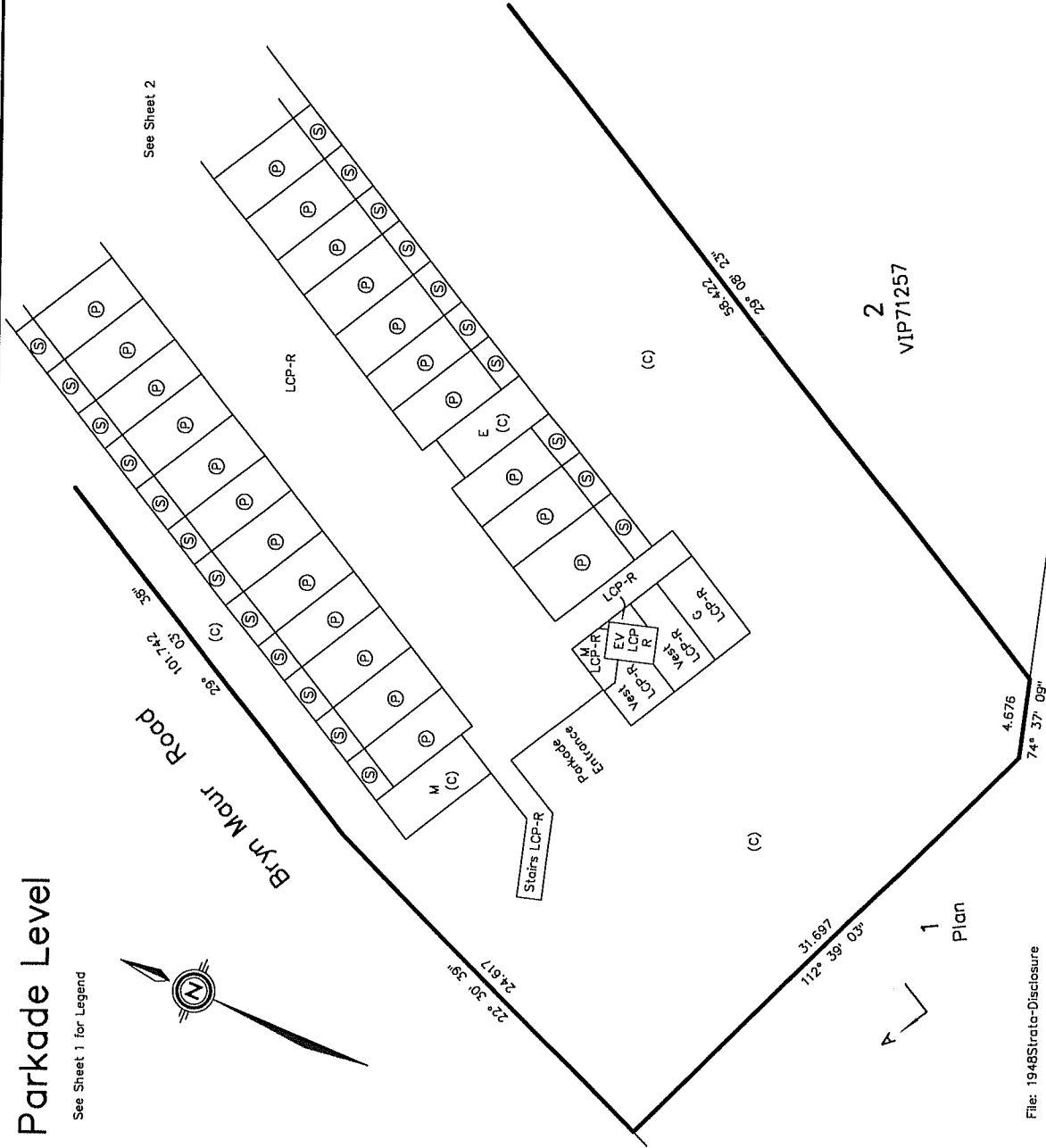
Parkade Level

See Sheet 1 for Legend



Sheet 3 of 13 Sheets

See Sheet 2



Scale 1:250

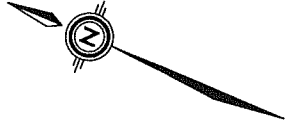


Note: Each Residential Strata Lot will be assigned one (1) LCP parking stall and one (1) adjoining LCP storage locker unless otherwise noted.

2
VIP71257

1
Plan

File: 19485Strata-Disclosure



Goldstream Avenue

line of Potcode Level below

(C)

SL 4
336.2 m²

SL 3
153.9 m²

SL 2
203.6 m²

SL 1
159.5 m²

SL 5
262.5 m²

SL 6
89.8 m²

SL 7
121.0 m²

101.742
26° 03' 35"

Area 2

(C)

(C)

(C)

(C)

(C)

(C)

(C)

(C)

(C)

(C)

(C)

(C)

(C)

(C)

(C)

(C)

(C)

(C)

(C)

(C)

(C)

(C)

(C)

(C)

(C)

(C)

(C)

Building D Ground Floor Strata Lots 1 to 7

Scale 1:200



See Sheet 1 for Legend

Bryn Mour Road

line of Potcode Level below

Stairs
LCP-R

E
LCP-C

LCP-R

EV
LCP-R

Stairs
LCP-R

Lobby
LCP-R

(C)

(C)

(C)

(C)

(C)

(C)

(C)

(C)

(C)

(C)

(C)

(C)

(C)

(C)

Area 3

(C)

Area 8

(C)

Area 7

(C)

Area 7

(C)

Area 7

(C)

Area 7

(C)

Area 7

(C)

Area 7

(C)

Area 7

(C)

Area 7

(C)

Area 7

(C)

Area 7

(C)

Area 7

(C)

Area 7

(C)

Area 7

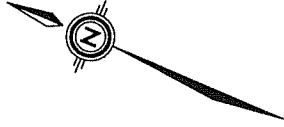
(C)

Area 7

(C)

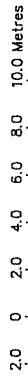
continued
See Sheet 9

File: 1948Strata-Disclosure

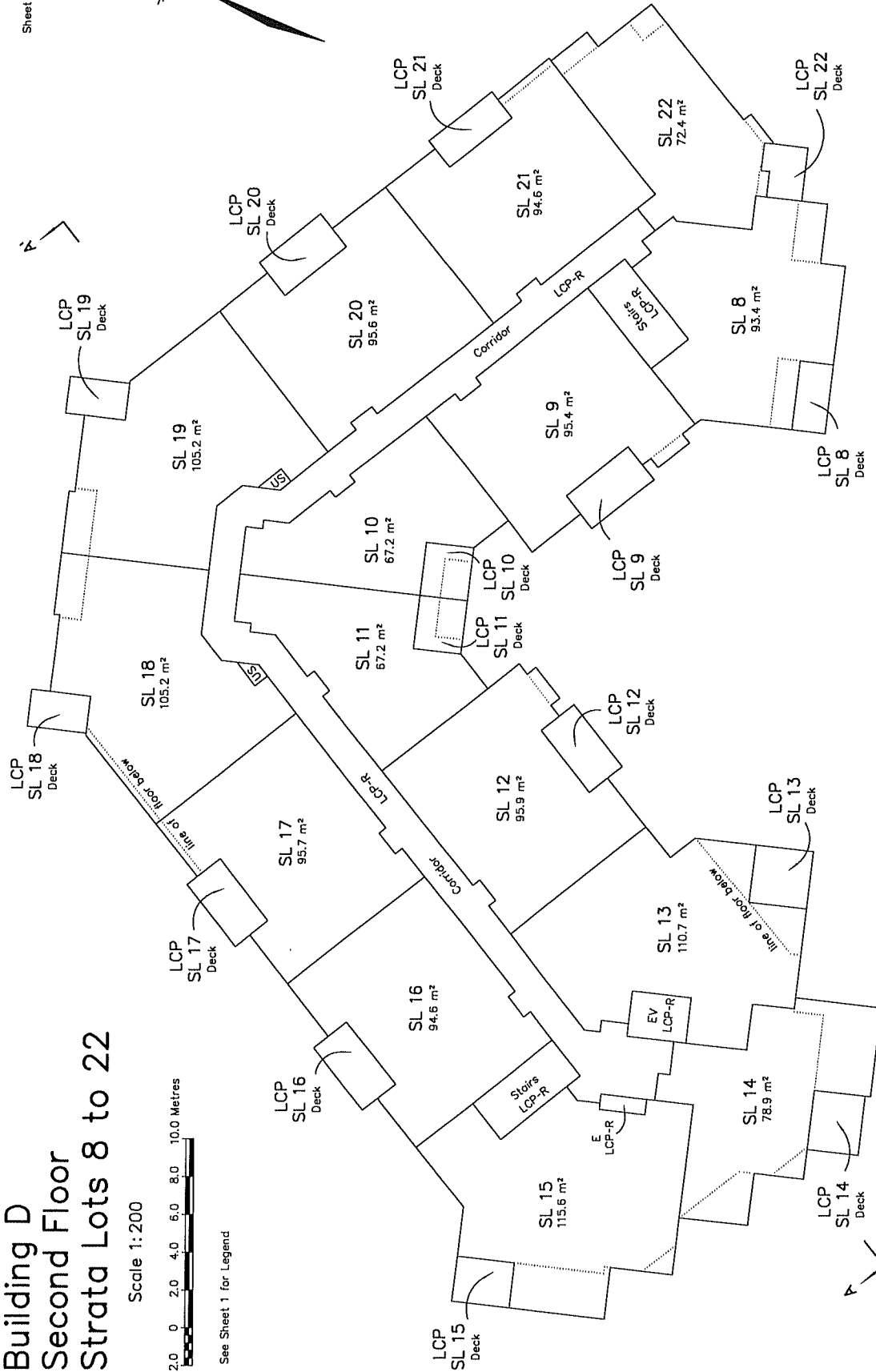


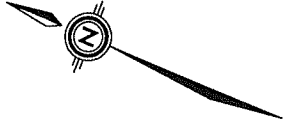
Building D Second Floor Strata Lots 8 to 22

Scale 1:200



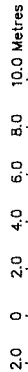
See Sheet 1 for Legend



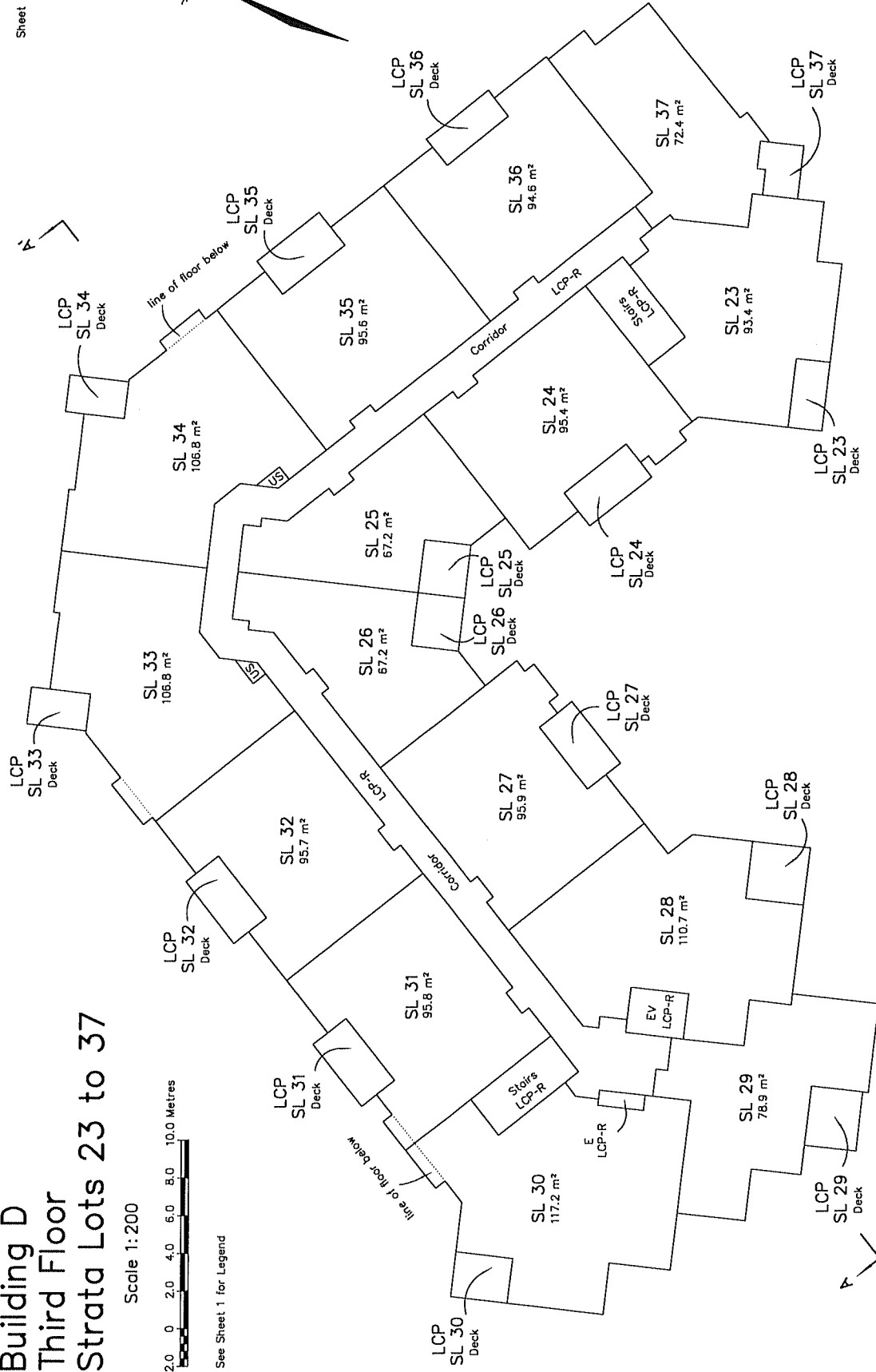


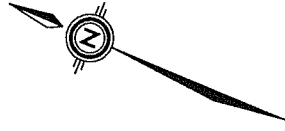
Building D Third Floor Strata Lots 23 to 37

Scale 1:200



See Sheet 1 for Legend



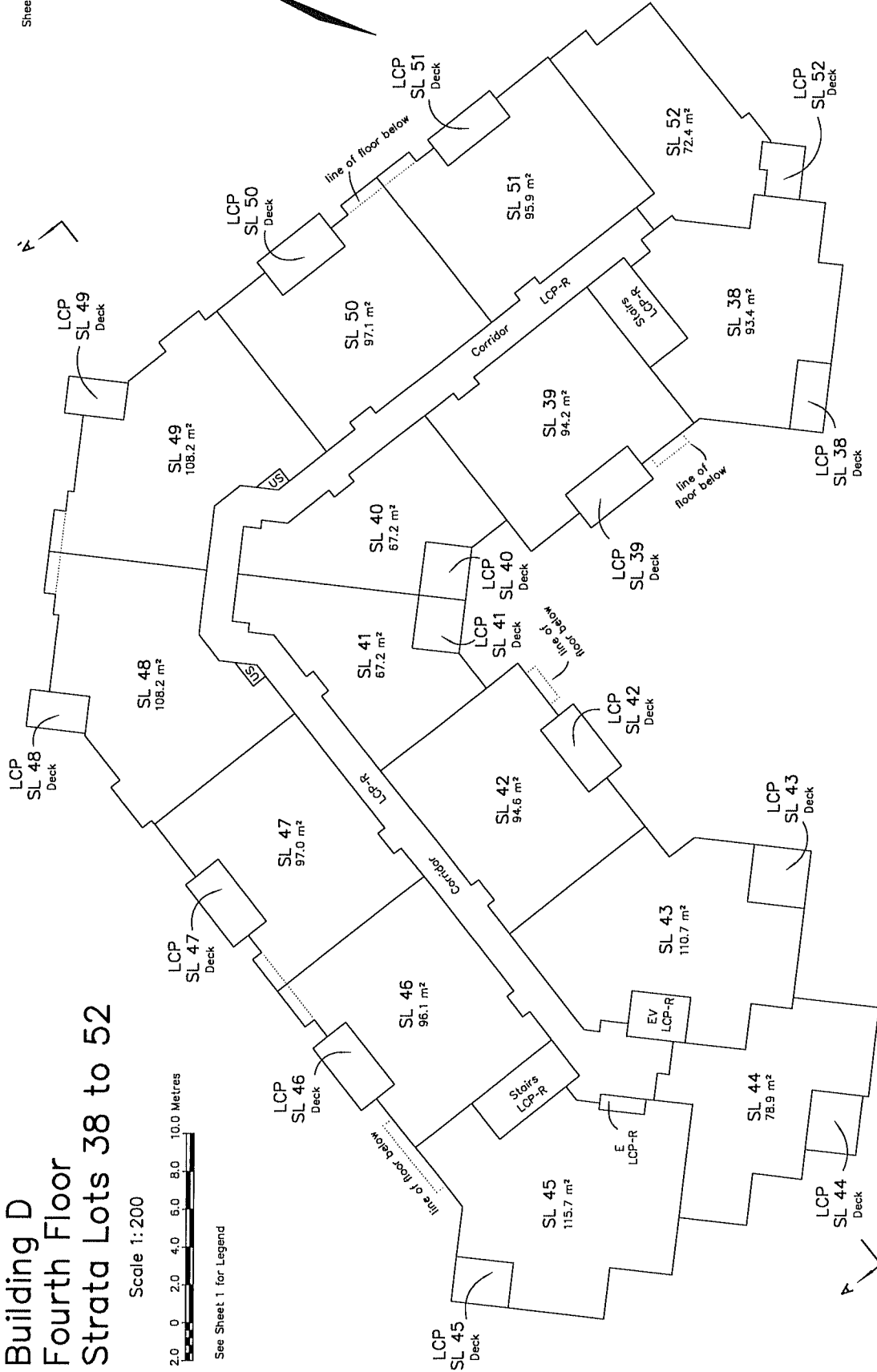


Building D Fourth Floor Strata Lots 38 to 52

Scale 1:200



See Sheet 1 for Legend



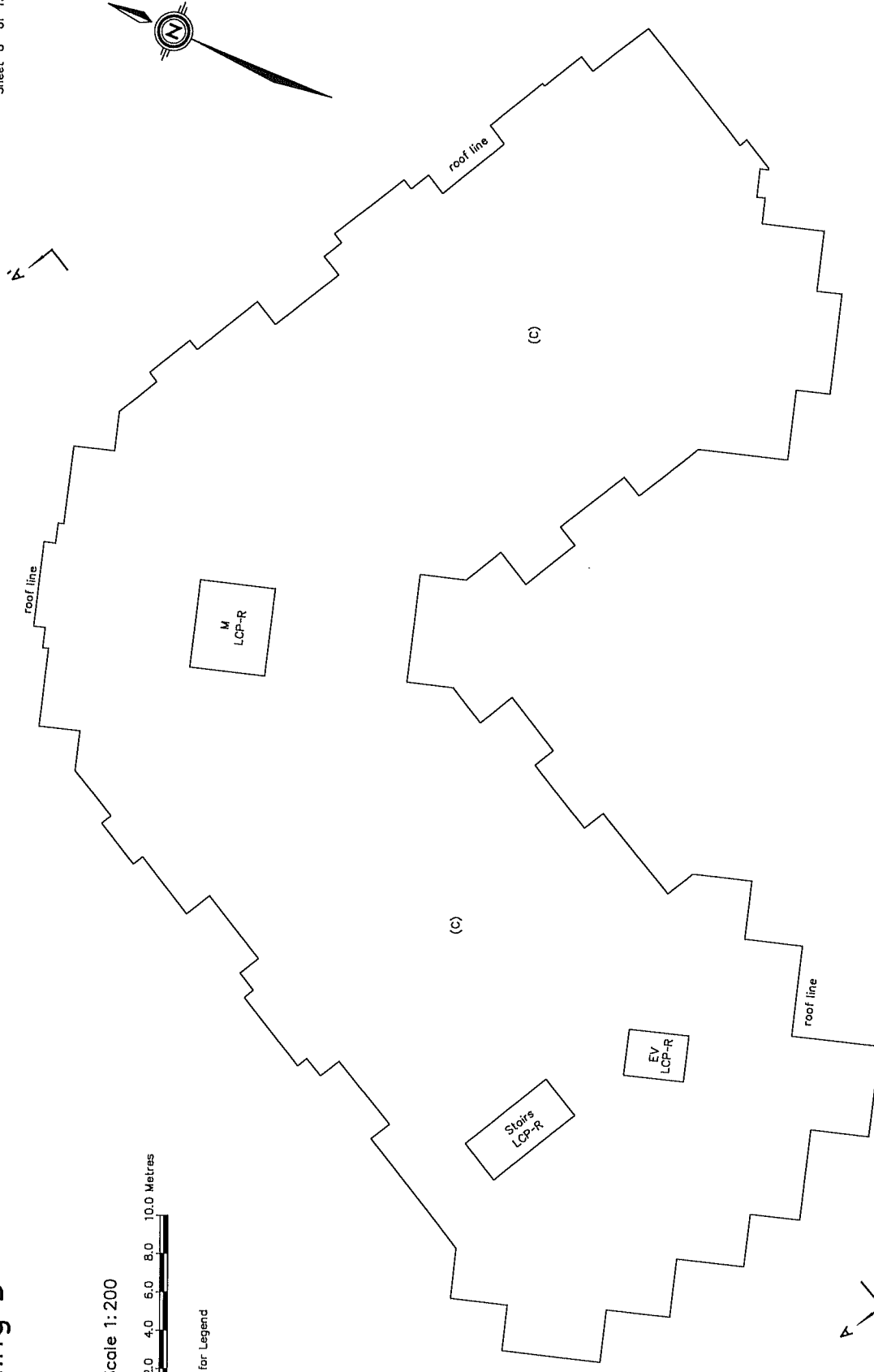
Building D Roof

Sheet 8 of 13 Sheets

Scale 1:200



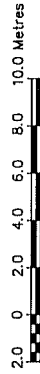
See Sheet 1 for Legend



File: 1948Strato-Disclosure

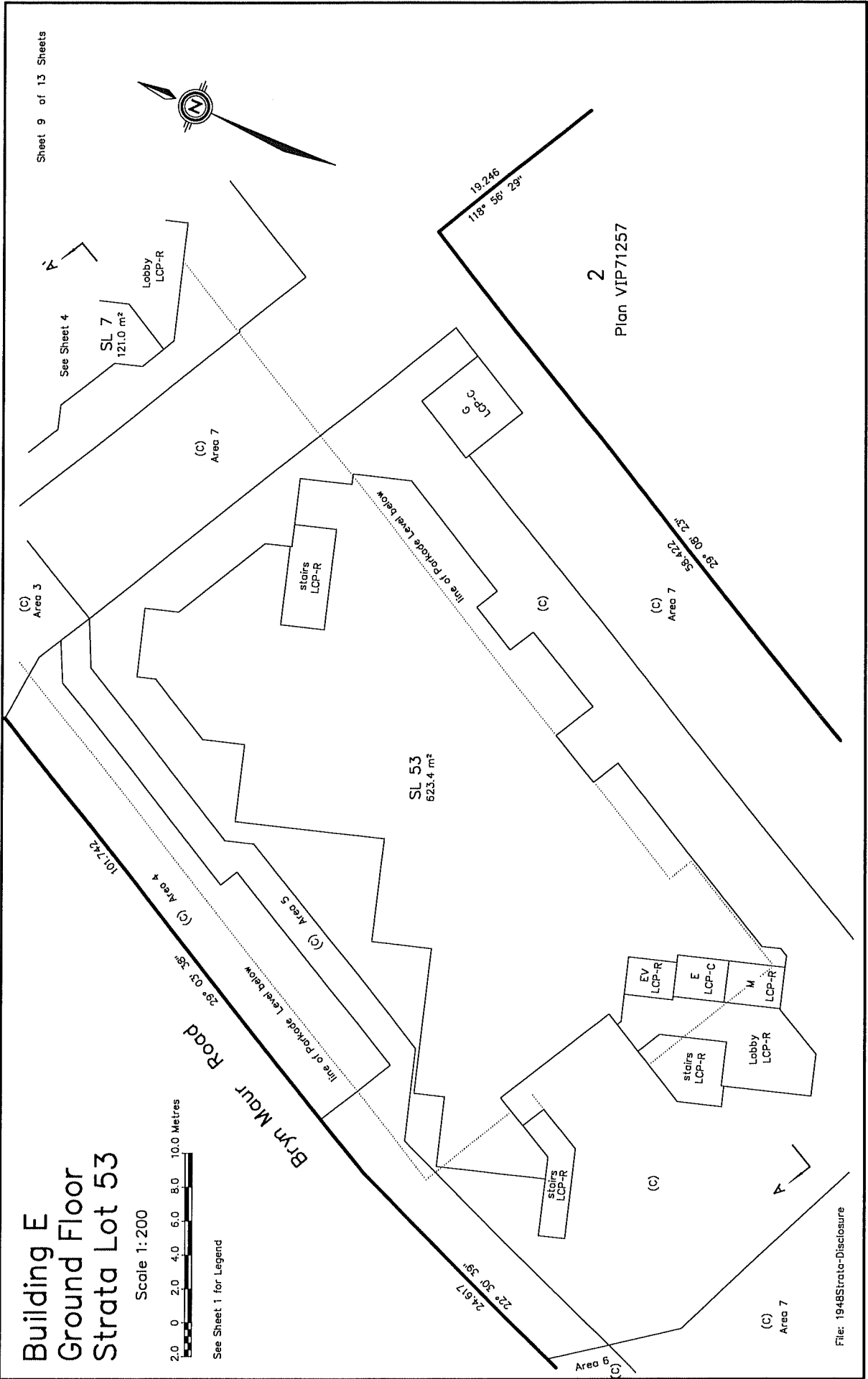
Building E Ground Floor Strata Lot 53

Scale 1:200

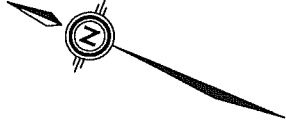


See Sheet 1 for Legend

Sheet 9 of 13 Sheets



File: 1948Strator-Disclosure

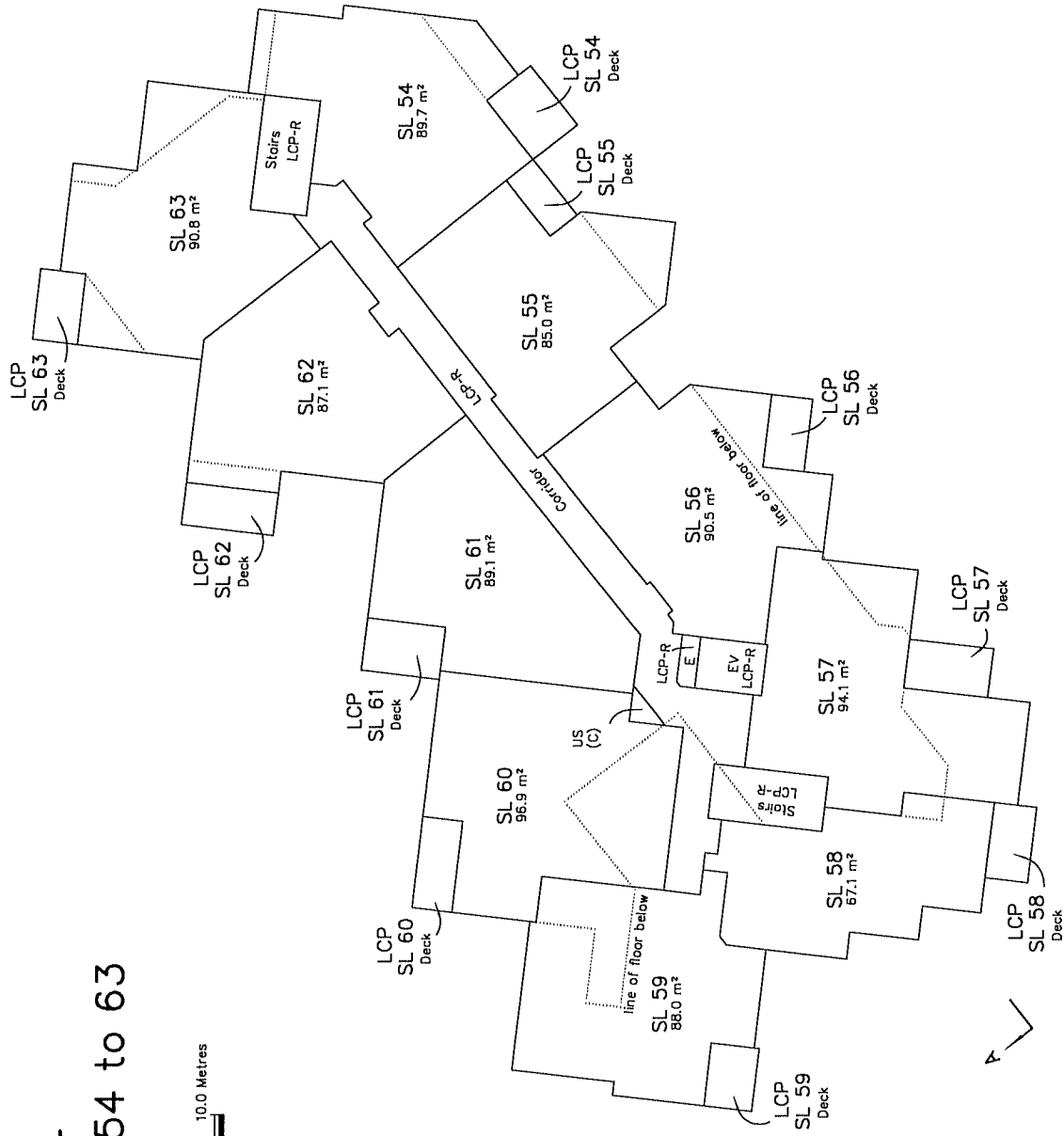


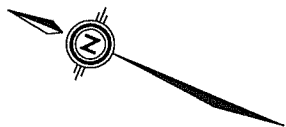
Building E Second Floor Strata Lots 54 to 63

Scale 1:200



See Sheet 1 for Legend



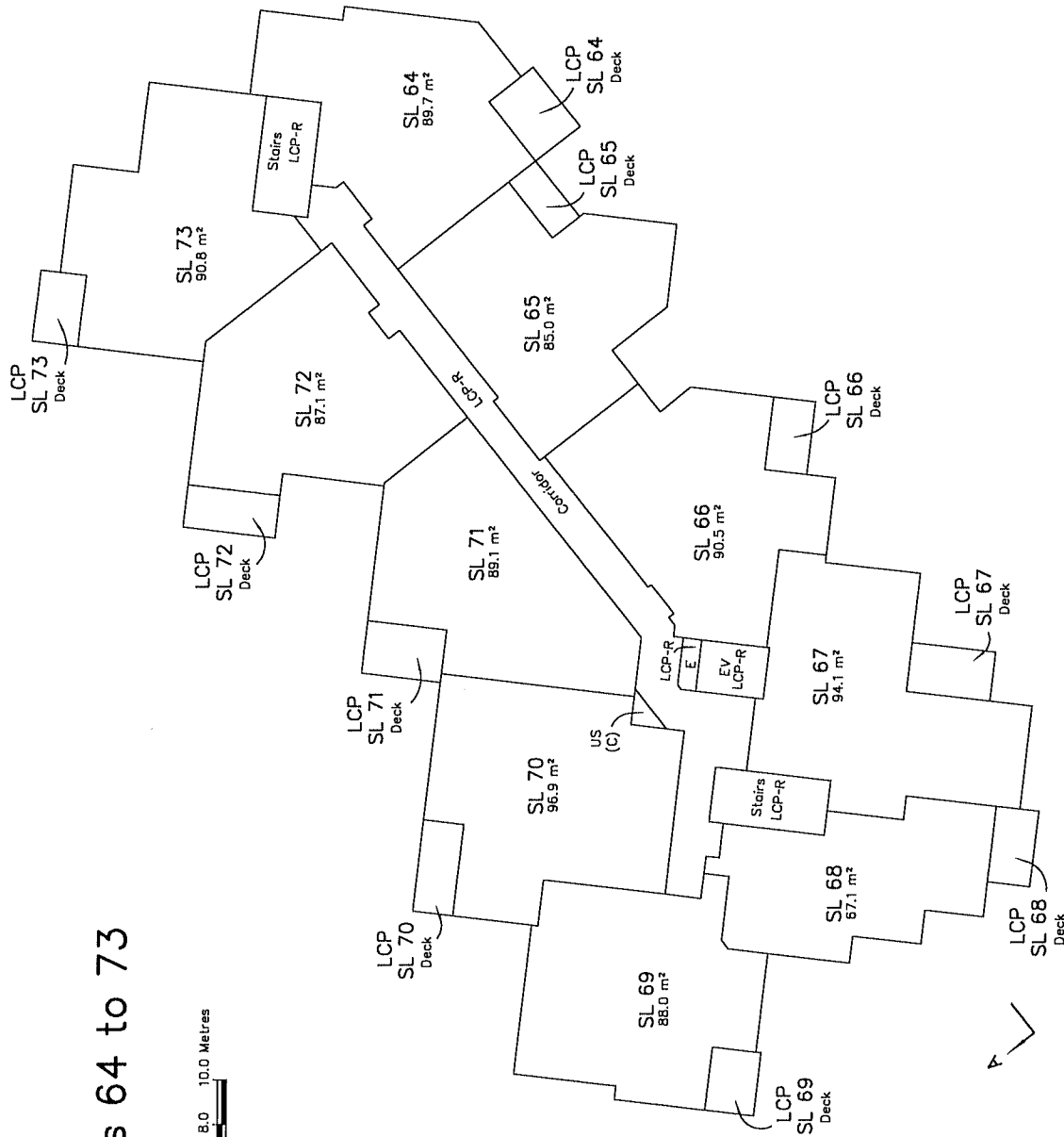


Building E Third Floor Strata Lots 64 to 73

Scale 1:200



See Sheet 1 for Legend



Building E Roof

Scale 1:200



See Sheet 1 for Legend

